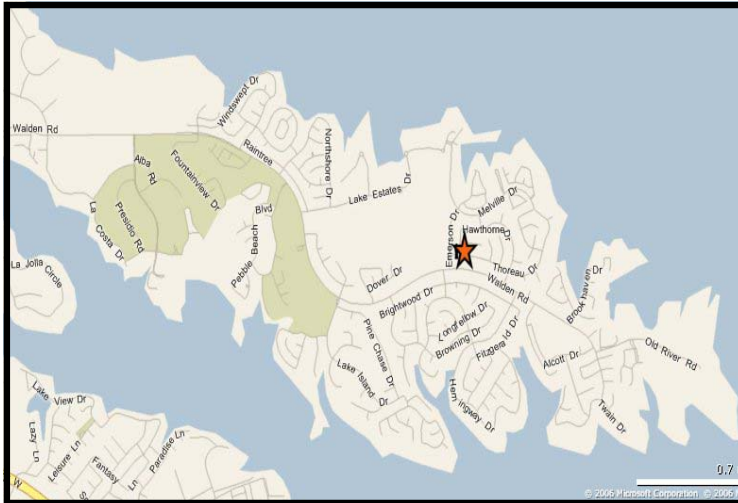




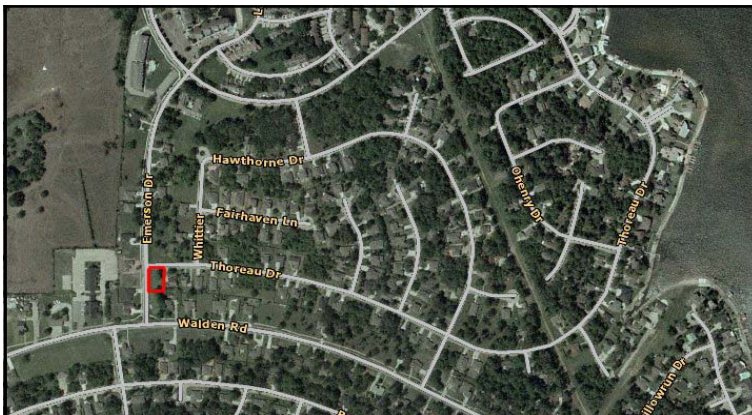
Al Lum Properties



Walden on Lake Conroe Residential Lot

Walden on Lake Conroe offering mature trees, fabulous Private 18 hole golf course, 536 slip marina, 16 court tennis facility, swimming pools and a 2.1 mile "hike and bike" trail. Corner lot just off Walden Road near the Marina. Deed Restricted subdivision.

- 12327 Thoreau Drive
- 76.74' frontage on Thoreau Dr
122' frontage on Emerson Dr
- 9900 sq ft +/-
- Montgomery School District
- All Utilities Montgomery MUD #8
- Not in Flood Plain
- 2007 Tax rate \$2.23
- Price \$34,650



**Contact Rebecca Lum
281-821-2020**

Al Lum Properties, Inc.
P O Box 682825 Houston, Texas 77268-2825
281.821.2020 Fax:281.821.0100
www.allumproperties.com

The information above is believed to be true and reliable, but no warranty or representation, express or implied, is made as to its accuracy. This information is submitted subject to errors, omissions, change of price, rental or other conditions, withdrawal without notice, and to any listing conditions imposed by our principles.